

Instructions to fit the Snorkel Kit S073D

for the D40 Navara - R51 Pathfinder Diesel

1.0 Introduction

Airflow Vector Pty Ltd thanks you for your purchase and the trust you put in our products.

We strive to supply our customers with the highest quality equipment based on the most efficient design and best styling. We are confident that you will enjoy using our Snorkel system.

It should improve the power of your vehicle as well as reduce its fuel consumption.

When the

1.1 General instructions

Follow carefully the instructions listed on these pages and use the template provided, do not over tighten bolts. Do not use silicone on any connections, use mastic.

Ensure that safe work practices are followed when installing your Airflow Snorkel. Protective ear and eye wear should be worn at all times when using power tools.

1.2 Disclaimer

It is highly recommended that installation is undertaken by a qualified mechanic or panel beater. Airflow Vector will not be held responsible for any damage incurred through incorrect fitment of the templates and workmanship. It is the responsibility of the fitter to ensure that particular care is taken when assembling the Snorkel kit to the vehicle as it may cause damage to the windscreen and or electrical components. Safe work practices must be used at all times when undergoing installation.

We guarantee Airflow Vector's kits against manufacturing defects as long as proof of purchase can be established.

All models produced by Airflow Vector are verified to suit right hand drive vehicles according to Australian specifications. Variations in vehicle specifications may occur in other markets.

If you're in doubt about the product suitability, please forward a photograph of the engine bay, air filter housing and of the vehicle at frontal/side position to info@airflowvector.com

2.0 List of Components



S073D Kit content				
Ref	Designation	Qty	Length	Unit
SP084	Snorkel Pathfinder/R51 Navara/D40	1		
SP063	Air Ram 3.5"	1		
SP095	Under Bonnet Pathfinder D40	1		
SP091	Under Bonnet Jeep 90° Bend	1		
SK013	Bolt kit	1		
SP019	Hose Clamp 60/80mm	3		
SP015	TPR Hose 76mm	1	250	mm
SP018	Hose Clamp 80/100mm	2		
SP171	Plastic bag 280x380mm	1		
SD073	Template	1		
SD073DE	Booklet	1		

Fasteners included		
Ref	Designation	Qty
SP072	A Pillar Extended S73D-S73P	1
SP025	Washer Panel 1/4 x 1.1/4 x 16g Z/P	6
SP033	Washer Panel 1/4 x 3/4 Z/P	1
SP024	G/Bolt M6 x 12mm Z/P	1
SP026	Screw Plug Nylon	2
SP029	Screw Self Tap 10gx5/8 Z/P	3
SP023	Washer Spring 1/4 x 1/4 Z/P	1
SP022	Stud M6 x 25mm Z/P	7
SP027	Flange Nut M6 Z/P	7
SP170	Plastic bag 75x125mm	1

Ensure that all parts listed are included in the parcel before starting any work.

The total expected time of installation is around 2 hours.

2.1 List of tools and additional parts required

Masking tape, clear tape, black mastic, hammer, centre punch

Assorted screw drivers, sockets and spanners

90mm hole saw

Assorted drill set, wet / dry sand paper, ½ round file, Small square file,
Zinc rich primer

It may be necessary to acquire new fixings from Nissan to replace the inner guard fixings if they get damaged during their removal

3.0 Detailed Instructions



3.1 Prior starting any work, ensure that the configuration of the air box is as shown. If it is not, the fitting of this kit will not be possible. Contact your dealer for further assistance



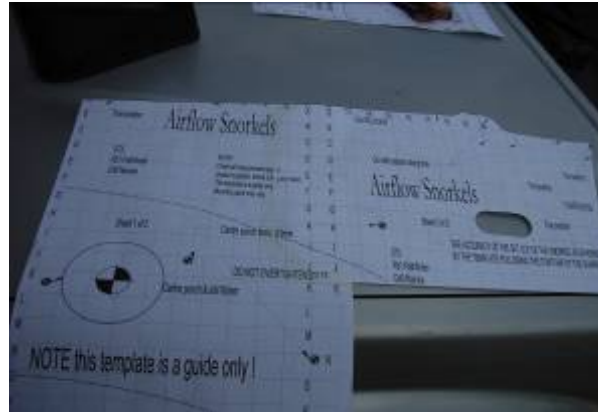
3.2 Remove the air box



3.3 Unscrew the splash panel...



3.4 ...and remove it.



- 3.5 Read the template carefully
- 3.6 Cut the corner on sheet two
- 3.7 Cut out hole for the indicator
- 3.8 Cut the template out along the guard line
- 3.9 Line up the two sheets using the grid line
- 3.10 Tape the template together on both sides using clear tape



- 3.11 Line up the template to the guard using the "True Point" arrow
- 3.12 Tape it to the guard ensuring to fit the contours of the guard
- 3.13 Centre punch all marked holes
- 3.14 Cover the areas to be drilled with masking tape
- 3.15 Mark the centre punch with a felt pen on tape



3.16 Pre-drill all holes at 5mm (7 snorkel mounting holes, 1 hole saw hole)



3.17 Using the hole saw, drill at LOW SPEED a 90mm hole



3.18 Drill the 7 snorkel mounting holes at 10mm



3.19 File to suit snorkel tube and to remove any burr



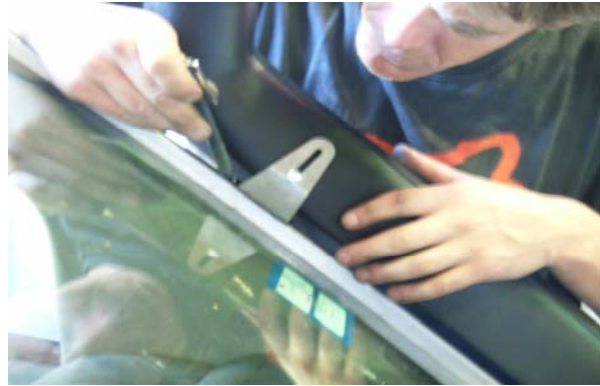
3.20 Screw the 7 studs SP022 with chemical locking compound; at least 20mm must protrude.



3.21 Fit the "A" pillar bracket SP072 with the washer SP023 and bolt SP024
Do not over tighten fixings to avoid damage to the snorkel



3.22 Fit temporarily the snorkel SP084 to allow the marking of the "A" pillar



3.23 Mark the "A" pillar bracket position

Note: This Snorkel is fitted with a second "A" pillar location to be installed if one intends to use the Collector Pre-Cleaner instead of the Air Ram. If required, please contact us to obtain the Bolt Kit SK213



3.24 Remove the snorkel

3.25 Centre punch the 2 holes



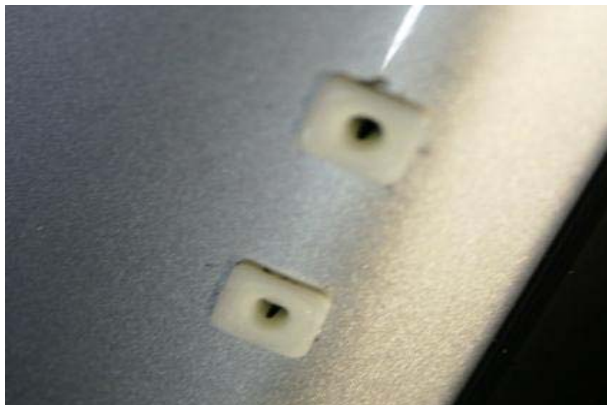
3.26 Drill the 2 x 7mm holes for the "A" pillar position



3.27 File the holes with a square file to suit nylon plugs SP026



3.28 Paint ALL raw metal surfaces with Zinc rich primer (7 snorkel fixing holes, 1 air intake hole, 2 "A" pillar holes)



3.29 Once the paint is dry, fit the 2 square plugs SP026



3.30 Remove these parts off the air box and discard them



3.31 Please wear gloves

3.32 Use only **NON SILICONE** BASE back mastic

3.33 Plug all the holes with sealant



3.34 Cover this connection with sealant



3.35 Re-install the air box in the engine bay but do not bolt it back yet



3.36 The long side of the SP095 will connect to the TRP hose

3.37 The short side will connect to the air box



- 3.38 Smear the inside of both sides of the TPR hose SP015 with sealant
- 3.39 Slide the hose clamps SP019 on each end
- 3.40 Connect one end to the long side of the under bonnet SP091
- 3.41 Connect the other end to the long side of the SP095

- 3.42 Smear some sealant inside the snorkel SP084
- 3.43 Slide the SP095 through the hole in the inner mud guard
- 3.44 Slide a hose clamp SP019 on the short side of the SP091 and align it with the hole in the outer mud guard



- 3.45 While holding the SP091 under the guard, connect the snorkel SP084 to it through the guard

- 3.46 Fit washers SP025 (x6) and SP033 (x1) (at the front of the snorkel) with nuts SP027 (x7) to secure the snorkel to the guard
Do not over tighten fixings to avoid damage to the snorkel
- 3.47 Tighten the hose clamp SP019 under the guard



3.48 Slide a hose clamp SP018 onto the SP095

3.49 Connect the SP095 to the air box



3.50 Tighten the hose clamp SP018

3.51 Resecure the air box to the engine bay



3.52 Re-insert the air filter

3.53 Close the air box



3.54 Refit the splash panel



3.55 Secure the bracket to the "A" pillar with the two self tap screw SP029



3.56 Slide the hose clamp SP018 on the air ram SP063 then slide it on the snorkel SP084

3.57 Ensure that the top of the snorkel matches the top of the slot cut in the Air Ram

3.58 Tighten the hose clamp

Airflow Vector Pty Ltd

4 Collins Rd, DROMANA VIC. 3936

AUSTRALIA

Ph: +61 3 5987 3733

www.airflowvector.com



3.59 Drill the hose clamp next to the worm drive

3.60 Secure the Air Ram with the self tapping screw SP029

Note: The Air Ram is also available in Fluro, green or blue

Important note: Do not turn the Air Ram away from the direction of travel because it will lessen the positive pressure necessary for proper operation. **In extreme situation, at speed above 25km/h (15m/h) a vacuum may be generated causing irreversible engine damage**

Snorkels for your 4WD

4.0 Optional pre-cleaner (not included in this kit)



4.1 Remove the Air Ram SP063



4.2 Install Pre-cleaner filter sock SP065B



4.3 Air sock should neatly fit into the top of the snorkel body



4.4 Re-install the Air ram SP063

4.5 Tighten the hose clamp SP018 Screw the self tapper SP029 through the hose clamp



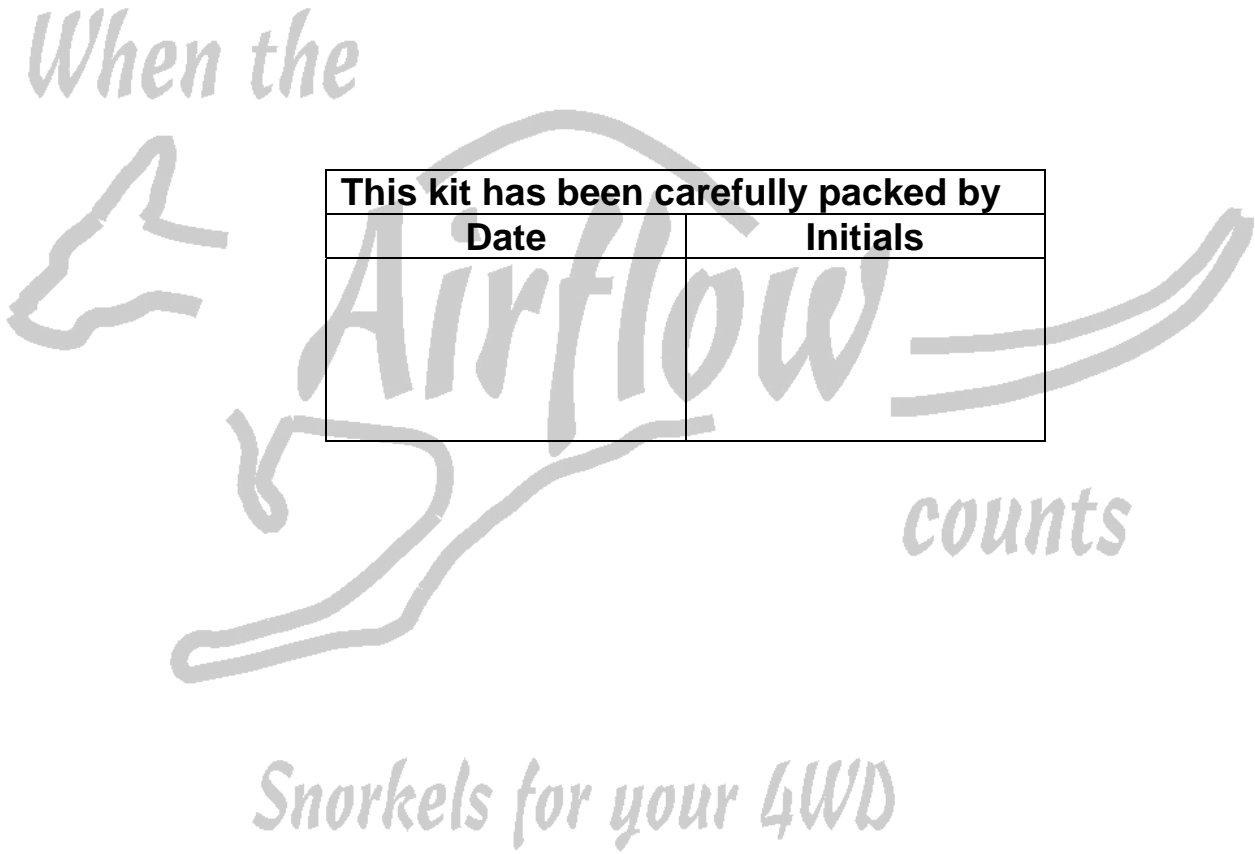
4.6 Polish with silicone cleaner

5.0 Improvement program

We strive to produce documentation and kits free of mistakes, however, should you discover any error or omission, please let us know by quoting the initials shown in the box below.

Furthermore, if you think that a step of this procedure could be improved, please send us at info@airflowvector.com your suggestions indicating the procedure name, its release date, the step details and the photo if necessary.

We appreciate your support.



This kit has been carefully packed by	
Date	Initials

Note: The content of this manual may be modified from time to time to ensure that improvements brought to our kits are described accurately. Before starting the installation, try to obtain the latest version of the instruction manual from our web site www.airflowvector.com